

Mobile Veterinary Endoscope with 3.5" Monitor

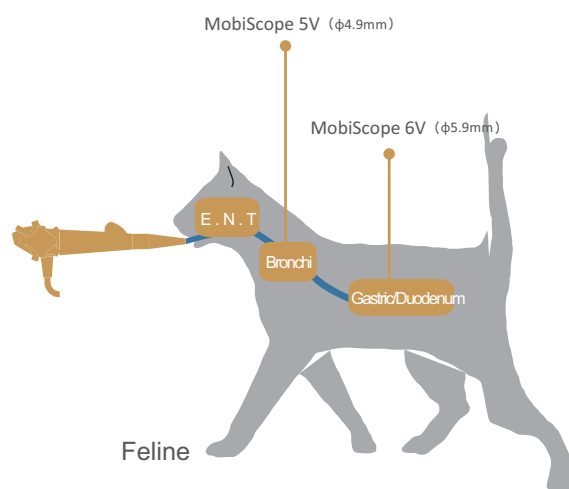
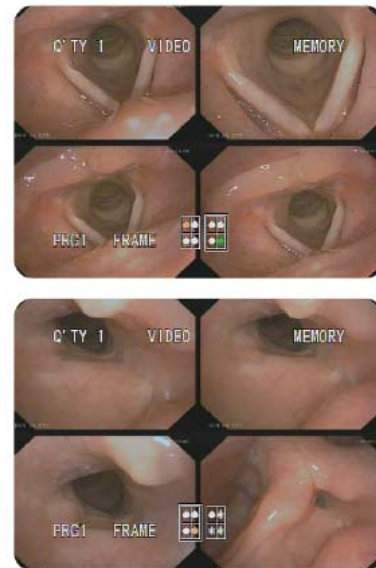
Model: MobiScope 5V/6V

Portable recording, renewable SD-card supports for storing of still images and videos.

Multi-functional design, equipped with working channel and support for suction, BAL, and instrument use.

Visual confirmation, featuring a 3.5 inch monitor and long-life LED light source.

Easy Easy to operate, a flexible ergonomic handle, which weighs less than 2Kg.



Esophagogastroduodenoscopy and colonoscopy in dogs and cats

MobiScope 6V

Working length	1000mm
Diameter of distal-end	5.9mm
Diameter of instrument channel	2.0mm
Range of bending	U160° D130°

MobiScope 5V

Working length	1000mm
Diameter of distal-end	4.9mm
Diameter of instrument channel	1.5mm
Range of bending	U160° D130°