

Portable Digital X-Ray Machine for Veterinary Use  
Model: DR-40V



Specification:

Input power	Voltage: AC220V±22V Frequency: 50/60Hz±1Hz
Maximum output power	4kW
Nominal power	100kV, 40mA, 0.1s, 4kW
kV adjusting range	40kV~110kV, Continuous adjustment step 1kV
mA adjusting range	36mA~60mA
mAs adjusting range	1mAs-190mAs, Shifted adjustment
s adjusting range	0.04s~3.2s
X-ray tube	Brand: Toshiba Focus: 0.6/1.5mm; Anode heat capacity: 76kHU
Flat panel detector	iRay 17*17 inch
Laptop computer	Brand: Lenovo CPU: Intel Core i5 Memory capacity: 4GB Screen size: 14 inch
Anatomy program	48 kinds of memory choices
X-ray machine size	290×260×230mm
Weight	100kg
Standard accessory	Hand switch, remote control, carrying case, trolley.

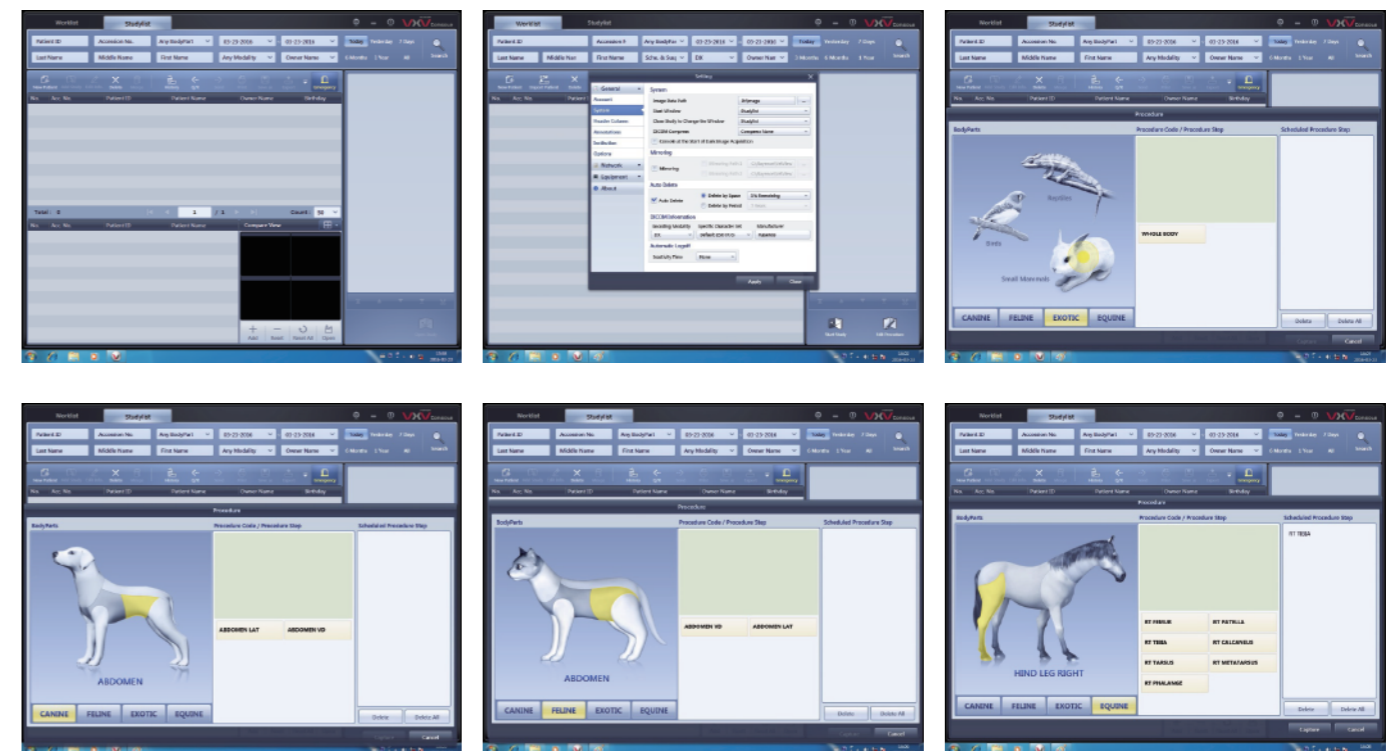
Contents:

Main components	Name of components	Model/specification	Quantity
DR system	Portable x-ray machine	DR-40V	1 set
	Digital detector	iRay (17x17 inches)	1 set
	Laptop computer	Lenovo	1 set
	DR image processing software for pet	Shinova	1 set
Accessory	Trolley	F1	1 set
	Carrying case		1 set

Application:

DR-40V portable digital X-ray machine is designed to produce super quality digital images for all large animals like equine, companion animals like dogs or cats, exotic and mixed animals, etc.

Veterinary Software Performance:



Trolley

Carrying case