

Portable Veterinary Anesthesia Machine

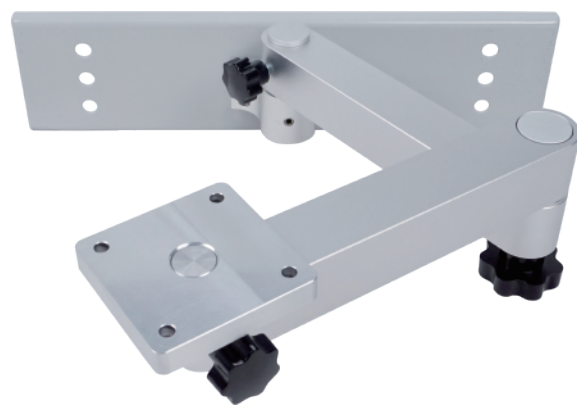
Model: AneCompact

Features:

AneCompact is a compact veterinary anesthesia machine that is very stable and reliable. It is widely used for pet hospital, veterinary clinic, animal zoo, farm department and so on.

Specification:

Respiration mode: Manual mode, open mode, closed mode, semi-open and semi-closed mode
Gas source: O₂, quick inlet port
O₂ FLUSH: 20L/min~75L/min
Flow meter: O₂, 0L/min~10L/min, adjustable easily
Airway pressure gauge: -20cmH₂O-100cmH₂O
APL valve (Pop Off valve): adjustable easily, range: 0-60cmH₂O
Inspiration valve and expiration valve: visible dome-type, ISO standard port, diameter 22mm
Soda lime chamber: 2 Liter, easy to change soda lime within one minute
Bains connector: open breath system, like Bains circuit and Jackson circuit
Anesthesia vaporizer: Enflurane, Isoflurane, Halothane or Sevoflurane vaporizer. Supply selectatec compatible mounting bar, ISO 23mm mounting bar is also compatible.
Auxiliary gas source output: supply the gas source to anesthesia ventilator
Three methods: tabletop, trolley or wall-mounted type (trolley and wall-mounted type is optional)



Wall-mounted type (optional)

Standard configuration:

Anesthesia machine, one vaporizer, one disposable breath circuit, one reservoir bag, one O₂ gas source pipeline.

Optional configuration:

Enflurane, Isoflurane, Halothane or Sevoflurane vaporizer;
Trolley, wall-mounted arm, shelf for animal monitor.



Stand type (optional)

Anesthesia Machine For Large Animals

Model: AneKing

Features:

AneKing is a professional large animal anesthesia machine designed and developed by Shinova. It is specially used for large animal, like horse, cow, tiger, pig etc. It can be used in farm, zoo, wild animal zoo, forest park, animal research center and so on.

Specification:

Inspiration mode: open mode, closed mode, semi-open and semi-closed mode
Gas source: O₂, 0.3~0.4Mpa
O₂ Flush valve: 25L/min~75L/min
Flow meter: high precision O₂ flow meter, 0~1L/min~10L/min
CO₂ circle absorber: with soda lime chamber, APL valve, airway pressure gauge, inspiration valve and expiration valve, the inspiration and expiration valve is demo-type and visible
APL valve: 0~60cmH₂O, adjust easily
Airway pressure gauge: -20cmH₂O~100cmH₂O, -2Kpa~10Kpa
Soda lime chamber: 8 Liter, it is easy to change soda lime and used for over 1000kg animal
Bains connector: it is used for open breath circuit, connect with Jackson breath circuit or Bains breath circuit
Anesthesia vaporizer: Enflurane, Isoflurane, Halothane, Sevoflurane vaporizer with selectatec compatible mounting bar.
Cage mounting vaporizer is compatible
A handle on the top
Trolley is easily to transport everywhere (optional)



Trolley (optional)

Standard configuration:

Anesthesia machine, one vaporizer, one gas source pipeline, one set disposable breath circuit, one airbag.

Optional configuration:

O₂&N₂O two tubes flow meter, Trolley.